

AQUA4D® H-A PRO M

The H-A Pro M is a ready-to-use water treatment system, fully pre-assembled at our headquarters in Switzerland.

Ready-made system

Normal installation of the AQUA4D® system generally takes place at the customer's site, with the system delivered flat-pack style for self-assembly. This ready-made system gives AQUA4D® full quality control: it's built in controlled conditions at the headquarters, and FAT (Factory Acceptance Test) is completed before shipping, thus vastly reducing on-site installation time at the destination. The customer has only to connect the H-A Pro M to the irrigation network and to plug it to the electrical mains.

Easy to move

In some countries, during the winter the irrigation process stops and the system must be stored. Using an H-A Pro M makes it very easy to move the AQUA4D® system to a safe location where it does not suffer from cold temperatures.

Various configurations

Depending on the required flow rate, the system is available in 6 different configurations ranging from 65 to 130 m³/h (285 to 570 US gpm). The H-A Pro M is designed for both outdoor and indoor operation.

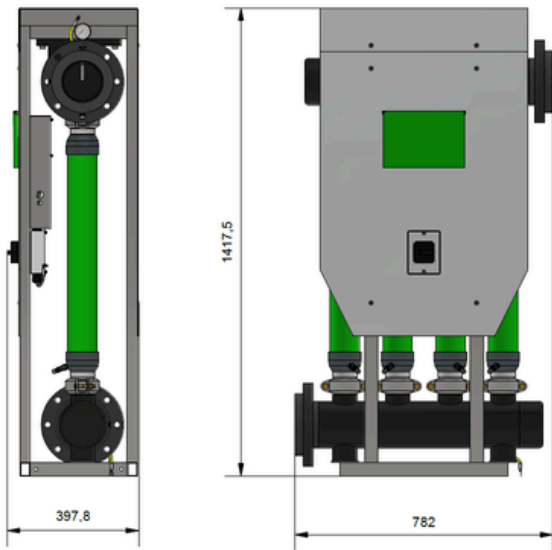
Low power consumption

The system requires only a small amount of power to run and can also be connected to an off-grid solar installation if there is no power network available on site.

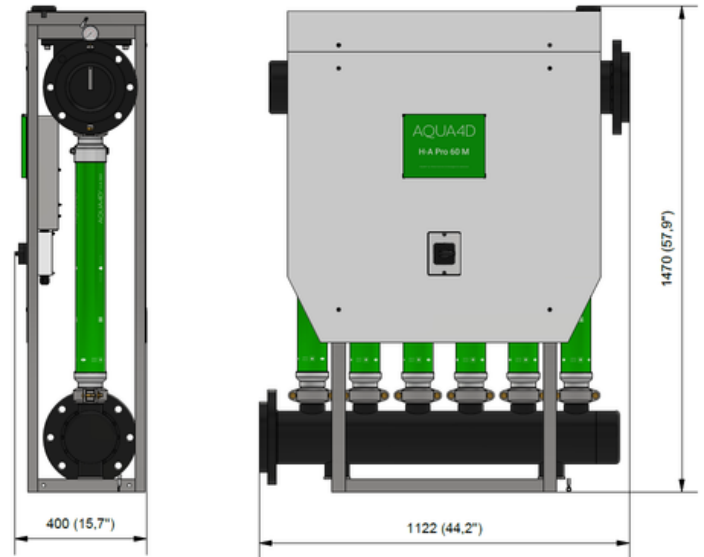


System overview: dimensional drawings

H-A Pro 30 M and H-A Pro 40 M



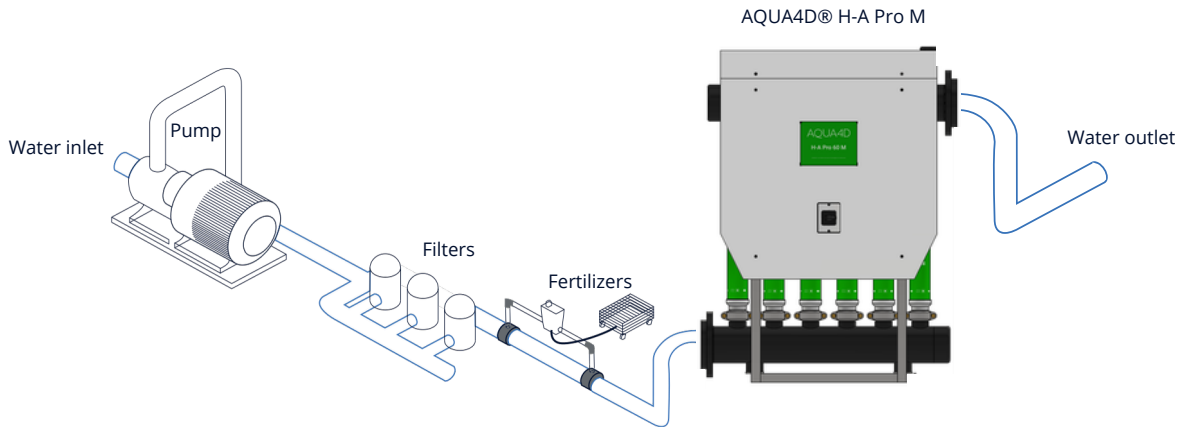
H-A Pro 50 M and H-A Pro 60 M



Specification	H-A Pro 30 M	H-A Pro 40 M	H-A Pro 50 M	H-A Pro 60 M
Max flow rate [m³/h]	65	86	108	130
Max flow rate [usgpm]	285	380	475	570
Power supply	100 - 240 VAC / 50 - 60 Hz			
Power consumption [W]	20	25	33	38
Max water temperature	60°C (140°F) @ 4 bars (58 psi)			
Max water pressure	10 bars (145 psi) @ 20°C [68°F]			
Max pressure drop	0.15 bar (at max flowrate)			
Storage temperature	0°C... 60°C (32° ... 140°F)			
Ambiant temperature	3°C... 45°C (37° ... 113°F)			
Weight (empty) [kg/lbs]	80 / 176	89 / 196	123 / 271	132 / 291
Hydraulic connexion	DIN DN 125	DIN DN 125	DIN DN 150	DIN DN 150

How and where to install the H-A Pro M

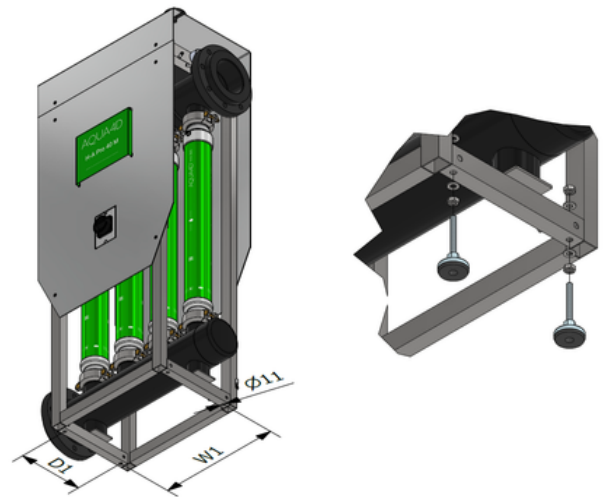
Location in the water network



Installation

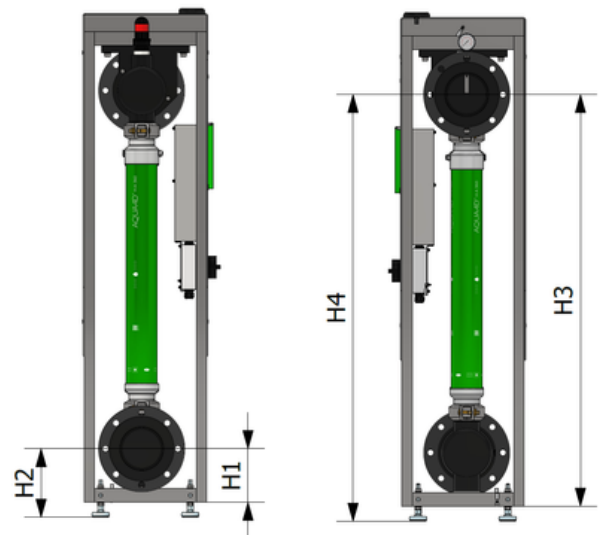
- Recommended support: concrete slab.
- Required clearance: minimum 80 cm around the unit for installation and maintenance.
- Mounting options:
 - With adjustable feet (accessory) to compensate for floor irregularities.
 - Or direct anchoring to the concrete slab.

Dimensions	30 M / 40 M	50 M / 60 M
D1 [mm / "]	260 (10.2")	260 (10.2")
W1 [mm / "]	480 (18.9")	350 (25.6")



Water inlet and outlet: dimensional drawings

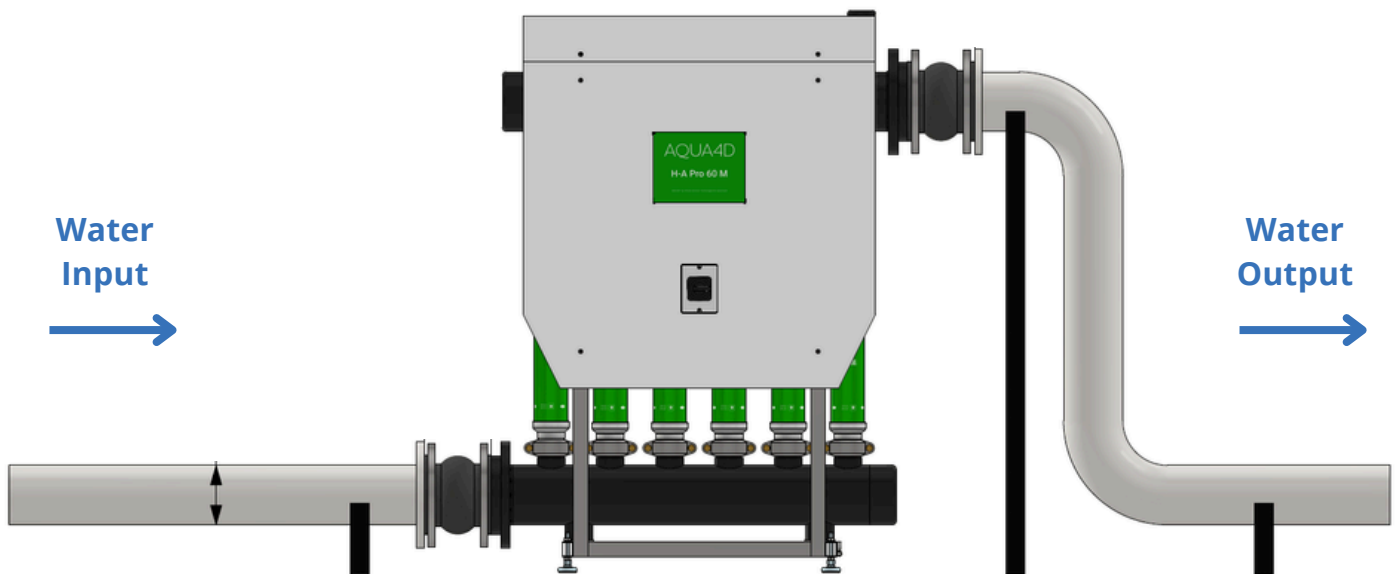
Dimensions	30 M / 40 M	50 M / 60 M
H1 [mm / "]	155 (6.1")	165 (6.5")
H2 [mm / "]	199-209 (7.8-8.2")	209-219 (8.2-8.6")
H3 [mm / "]	1194 (47")	1224 (48.2")
H4 [mm / "]	1238-1248 (48.7-49.1")	1268-1278 (49.9-50.3")



Hydraulic connection

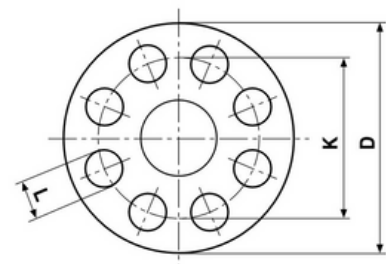
The system is designed to withstand a maximum pressure of 10 bars (145 psi). This limit must not be exceeded under any circumstances.

The system is made of plastic (PVC and PE). Keep stress on these parts low to avoid damage. If needed, install alignment compensators or expansion joints to reduce stress.



Flange dimensions

	H-A Pro 30 / 40 M	H-A Pro 50 / 60 M
Standards	EN 1092 (DIN)	EN 1092 (DIN)
DN	125	150
L [mm / "]	18 (0.71")	22 (0.87")
K [mm / "]	210 (8.27")	240 (9.45")
D [mm / "]	250 (9.84")	285 (11.22")



Datasheets and detailed user manuals are available on request : info@aqua4d.com

AQUA4D
 Ecoparc de Daval A9
 3960 Sierre
 Switzerland
 T +41 27 480 30 35
info@aqua4d.com
www.aqua4d.com