

AQUA4D®

- by Planet Horizons Technologies SA -

AQUA4D® F-A PRO M

The F-A Pro M is a process unit which is manufactured off-site as a self-contained system. The F-A Pro M is pre-assembled at our headquarters in Switzerland, before being delivered in its entirety to the customer.

AQUA4D® F-A Pro M

Ready-made system

Normal installation of the AQUA4D® system generally takes place at the customer's site, with the system delivered flat-pack style for self-assembly. This ready-made system gives AQUA4D® full quality control: it's built in controlled conditions at the headquarters, and FAT (Factory Acceptance Test) is completed before shipping, thus vastly reducing on-site installation time at the destination.

The customer has only to connect the F-A Pro M to the irrigation network and to plug it to the electrical mains.

Easy to move

In some countries, during the winter the irrigation process stops and the system must be stored. Using an F-A Pro M makes it very easy to move the AQUA4D® system to a safe location where it does not suffer from cold temperatures.

Various configurations

Depending on the required flow rate, the system is available in 6 different configurations ranging from 42 to 172 m³/h (184 to 757 US gpm). The F-A Pro M is designed for both outdoor and indoor operation.

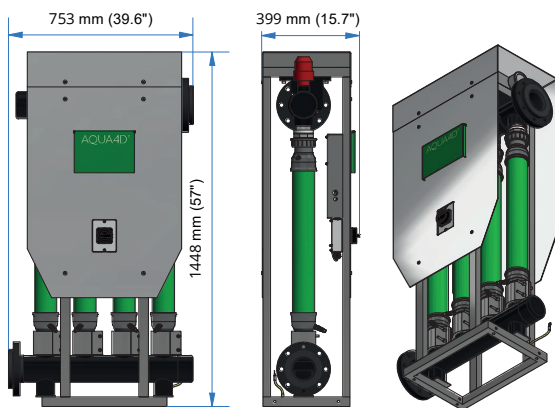
Low power consumption

The system requires only a small amount of power to run and can also be connected to an off-grid solar installation if there is no power network available on site.

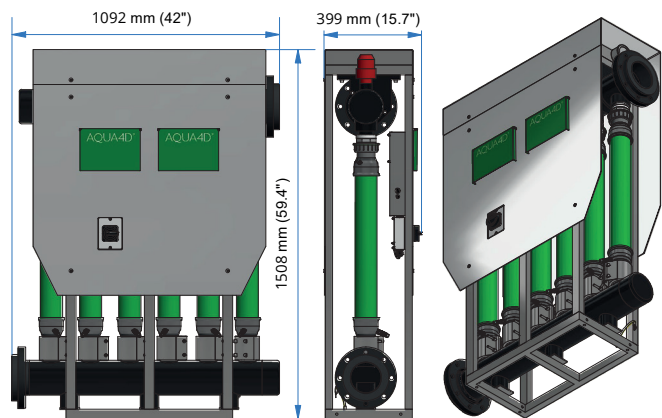


System overview: dimensional drawings

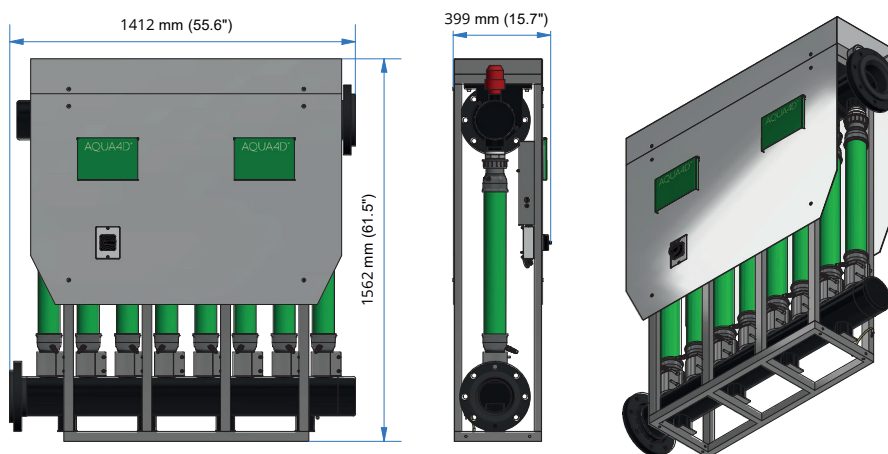
F-A Pro 30 M and F-A Pro 40 M



F-A Pro 50 M and F-A Pro 60 M



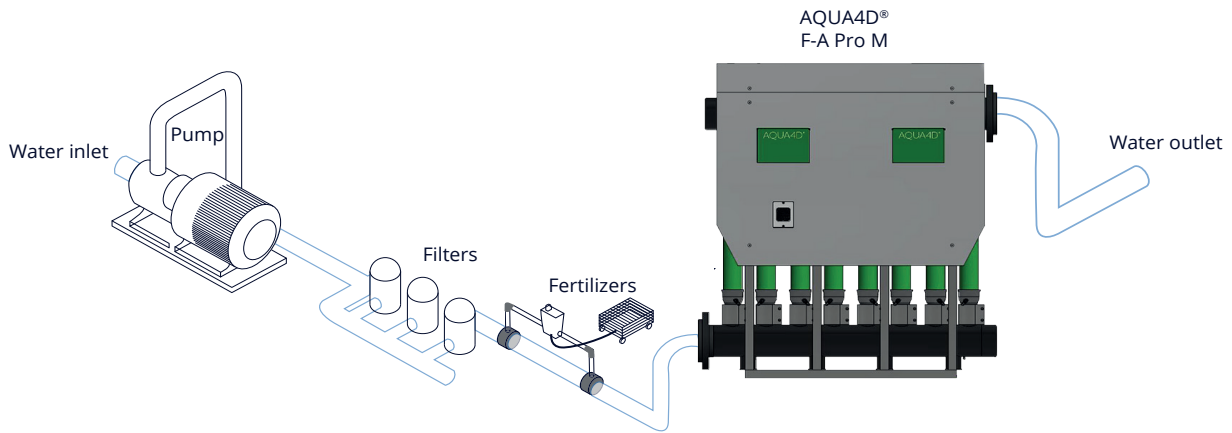
F-A Pro 70 M and F-A Pro 80 M



AQUA4D® F-A PRO M	F-A Pro 30 M	F-A Pro 40 M	F-A Pro 50 M	F-A Pro 60 M	F-A Pro 70 M	F-A Pro 80 M
Max. flow rate [m3/h]	64	86	108	129	151	180
Max. flow rate [US gpm]	282	378	475	567	664	761
Power Supply	100 - 240 VAC / 50 - 60 Hz					
Power consumption [W]	30	35	58	60	65	70
Max. water temperature	60°C (140°F) @ 4 bars (58 psi)					
Max. water pressure	10 bars (145 psi) @ 20°C [68°F]					
Max. pressure drop	0.15 bar (at max flowrate)					
Ambiant temperature	3°C... 45°C (37°... 113°F)					
Storage temperature	0°C... 60°C (32° ... 140°F)					
Weight (empty) [kg/lbs]	80 / 176	89 / 196	123 / 271	132 / 291	165 / 364	174 / 384
Hydraulic connexion*	DIN DN 100	DIN DN 100	DIN DN 125	DIN DN 125	DIN DN 150	DIN DN 150

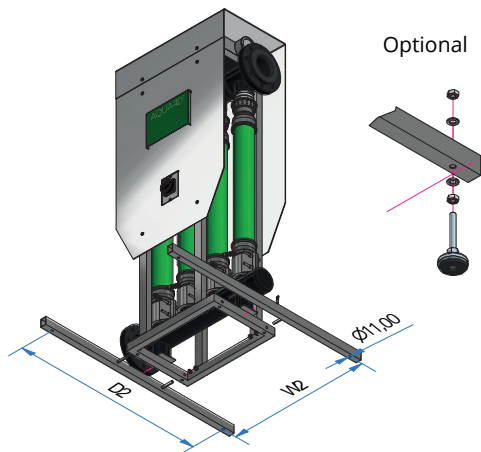
How and where to install the F-A Pro M

Location in the water network



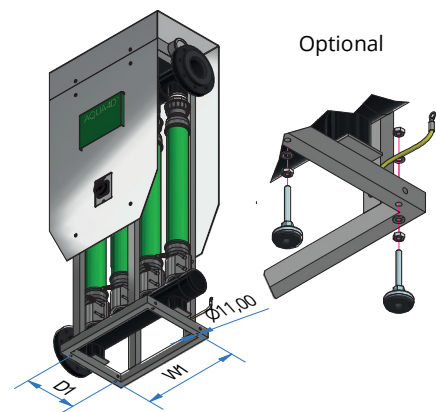
Outdoor Installation

- With removable feet
- Optional: adjustable feet



Indoor Installation

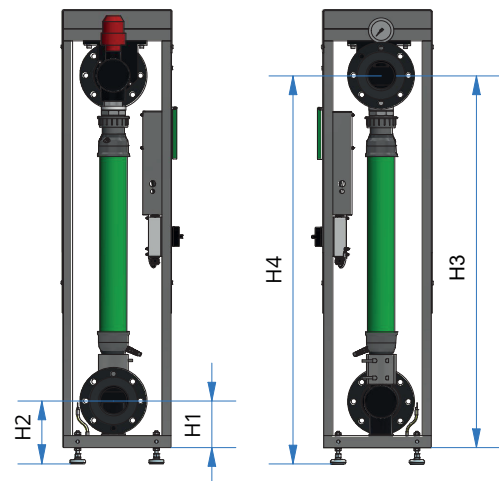
- Without removable feet
- Optional : adjustable feet



Dimensions	F-A Pro 30 M / F-A Pro 40 M	F-A Pro 50 M / F-A Pro 60 M	F-A Pro 70 M / F-A Pro 80 M
D1 [mm / "]	260 (10.24")	260 (10.24")	260 (10.24")
W1 [mm / "]	480 (18.9")	650 (25.59")	970 (38.19")
D2 [mm / "]	1000 (39.37")	1000 (39.37")	1000 (39.37")
W2 [mm / "]	540 (21.26")	710 (27.95")	1030 (40.55")

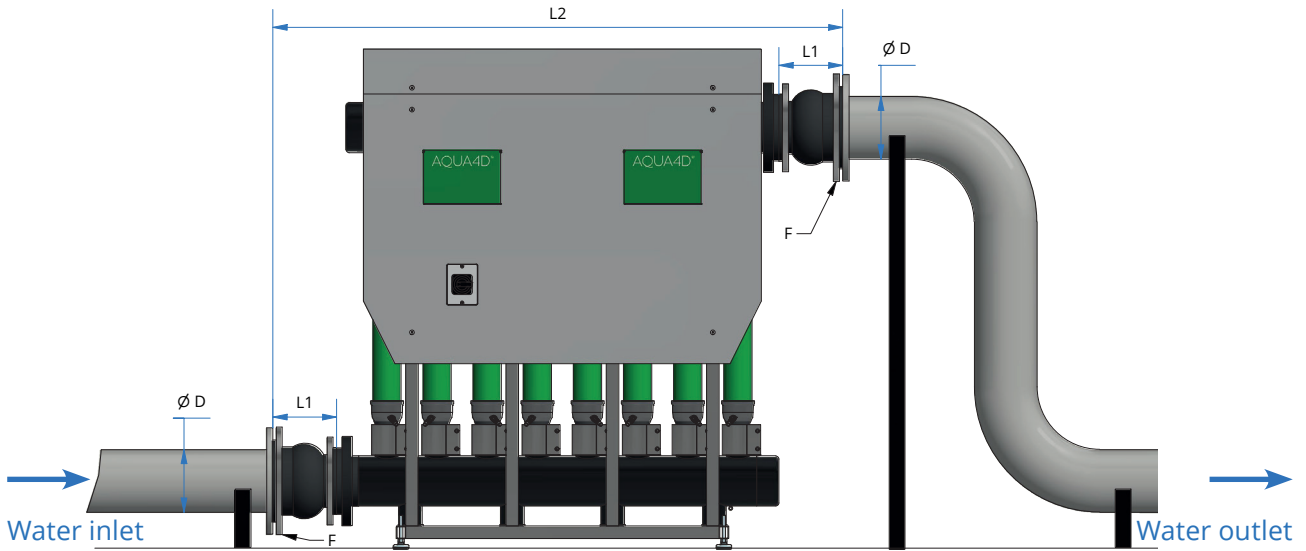
Water inlet and outlet: dimensional drawings

Dimensions	F-A Pro 30 M F-A Pro 40 M	F-A Pro 50 M F-A Pro 60 M	F-A Pro 70 M F-A Pro 80 M
H1 [mm / "]	155 (6.1")	170 (6.7")	185 (7.3")
H2 [mm / "]	198-213 (7.8-8.4")	213-228 (8.4-9")	228-243 (7.8-8.4")
H3 [mm / "]	1230 (48.4")	1275 (50")	1310 (51.6")
H4 [mm / "]	1275-1290 (50.2-50.8")	1320-1335 (52-52.6")	1355-1370 (53.3-53.9")

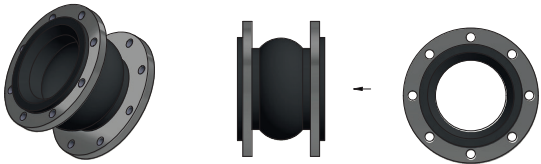


Hydraulic connection

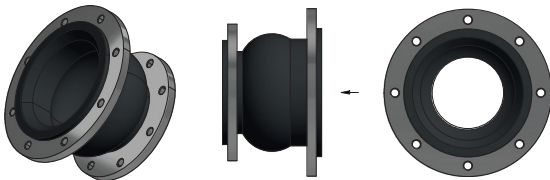
F-A Pro M are delivered with flexible rubber expansion joints adapted to piping dimensions at installation site. The options are as follows :



Rubber expansion joints



Reducing concentric rubber expansion joints



Connect F-A Pro 30 M or F-A Pro 40 M (DN100) to:

Ø D (Pipe)*	F (Flange standard)	Part N°	L1 [mm / "]	L2 [mm / "]
DN100	DIN PN16	30000	150 (5.91")	1053 (41.4")
DN125	DIN PN16	30001	197 (7.76")	1147 (45.2")
DN150	DIN PN16	30002	197 (7.76")	1147 (45.2")
DN200	DIN PN16	30003	197 (7.76")	1147 (45.2")
4"	ANSI LB 150	30100	150 (5.91")	1053 (41.4")
5"	ANSI LB 150	30101	200 (7.87")	1153 (45.4")

Connect F-A Pro 50 M or F-A Pro 60 M (DN125) to:

Ø D (Pipe)*	F (Flange)	Part N°	L1 [mm / "]	L2 [mm / "]
DN125	DIN PN16	30011	165 (6.5")	1422 (56")
DN150	DIN PN16	30012	200 (7.87")	1492 (58.7")
DN200	DIN PN16	30013	200 (7.87")	1492 (58.7")
5"	ANSI LB 150	30111	165 (6.5")	1422 (56")
6"	ANSI LB 150	30112	200 (7.87")	1492 (58.7")

Connect F-A Pro 70 M or F-A Pro 80 M (DN150) to:

Ø D (Pipe)*	F (Flange)	Part N°	L1 [mm / "]	L2 [mm / "]
DN150	DIN PN16	30022	180 (7.09")	1772 (69.7")
DN200	DIN PN16	30023	200 (7.87")	1812 (71.3")
DN250	DIN PN16	30024	220 (8.66")	1852 (72.9")
6"	ANSI LB 150	30122	180 (7.09")	1772 (69.7")
8"	ANSI LB 150	30123	200 (7.87")	1812 (71.3")

Datasheets and detailed user manual can be requested by emailing: support@aqua4d.com

Headquarters

AQUA4D

Ecoparc de DAVAL A9, 3960 Sierre

Switzerland

T +41 27 480 30 35

info@aqua4d.com

www.aqua4d.com

